

# Safety of toys —

## Part 3: Migration of certain elements

The European Standard EN 71-3:1994, with the incorporation of amendment A1:2000, has the status of a British Standard

## Committees responsible for this British Standard

The preparation of this British Standard was entrusted to Technical Committee SW/15, Safety of toys, upon which the following bodies were represented:

Association of Consulting Scientists  
 Association of Public Analysts  
 British Apparel and Textile Confederation  
 British Association of Toy Retailers  
 British Coatings Federation Ltd.  
 British Colour Makers' Association  
 British Importers' Confederation  
 British Paediatric Association  
 British Plastics Federation  
 British Retail Consortium  
 British Toy and Hobby Association  
 British Toy Importers' and Distributors' Association  
 British Toymakers' Guild  
 Child Accident Prevention Trust  
 Consumer Policy Committee of BSI  
 Consumers' Association  
 Department of Health  
 Department of Trade and Industry (Consumer Safety Unit, CA Division)  
 Department of Trade and Industry (Laboratory of the Government Chemist)  
 Institute of Trading Standards Administration  
 Mail Order Traders' Association  
 Paper Federation of Great Britain  
 Royal Society for the Prevention of Accidents

This British Standard, having been prepared under the direction of the Consumer Products and Services Sector Board, was published under the authority of the Standards Board and comes into effect on 15 June 1995

© BSI 2006

First published April 1989  
 Second edition June 1995

The following BSI references relate to the work on this standard:  
 Committee reference SW/15  
 Draft for comment 92/47194 DC

ISBN 0 580 24215 3

### Amendments issued since publication

Amd. No.	Date	Comments
10795	April 2001	
16465 Corrigendum No. 1	30 June 2006	Indicated by a sideline

# Contents

	Page
Committees responsible	Inside front cover
National foreword	ii
Foreword	2
Introduction	3
1 Scope	3
2 Normative references	4
3 Definitions	4
4 Requirements	5
5 Principle	5
6 Reagents and apparatus	5
7 Selection of test portions	6
8 Preparation and analysis of test portions	6
9 Determination of the quantity of migrated elements	11
10 Test report	12
Annex A <i>deleted</i>	13
Annex B (normative) Sieve requirements	13
Annex C (informative) Preparation and analysis of test portions	14
Annex D (informative) Background and rationale for the requirements and test methods in this part of EN 71	15
Annex ZA (informative) Clauses of this European Standard addressing essential requirements or other provisions of EU Directives	19
Figure C.1 — Diagram showing the procedure and analysis of test portions	14
Table 1 — Limits of element migration from toy materials	7
Table 2 — Analytical correction	9
Table B.1 — Sieve dimensions and tolerances	13

## National foreword

This British Standard has been prepared by Technical Committee SW/15 and is the English language version of EN 71-3:1994 *Safety of toys — Part 3: Migration of certain elements*, including amendment A1:2000 and Corrigendum July 2002, published by the European Committee for Standardization (CEN). This part of BS EN 71 supersedes BS 5665-3:1989, which is withdrawn.

### Cross-references

The British Standards which implement international or European publications referred to in this document may be found in the BSI Standards Catalogue under the section entitled “International Standards Correspondence Index”, or by using the “Find” facility of the BSI Standards Electronic Catalogue.

**Additional information.** When marking or specifying a product the manufacturer may mark or specify by reference to either the European Standard or the British Standard<sup>1)</sup>.

A British Standard does not purport to include all the necessary provisions of a contract. Users of British Standards are responsible for their correct application.

**Compliance with a British Standard does not of itself confer immunity from legal obligations. In particular the attention of users is drawn to the Toys (Safety) Regulations 1989 (SI 1275).**

### Summary of pages

This document comprises a front cover, an inside front cover, pages i and ii, the EN title page, pages 2 to 19 and a back cover.

The BSI copyright notice displayed in this document indicates when the document was last issued.

Sidelining in this document indicates the most recent changes by amendment.

---

<sup>1)</sup> Marking EN 71-3 or BS EN 71-3 or BS 5665-3 on or in relation to a product represents a manufacturer's declaration of conformity, i.e. a claim by or on behalf of the manufacturer that the product meets the requirements of the standard. The accuracy of the claim is solely the claimant's responsibility. Such a declaration is not to be confused with third party certification of conformity, which may also be desirable.

Descriptors: Toys, safety requirements, accident prevention, children, materials, toxicity, tests, determination, migrations, metals

English version

## Safety of toys — Part 3: Migration of certain elements

(includes amendment A1:2000)

Securite des jouets —  
Partie 3: Migration de certains elements  
(inclut l'amendement A1:2000)

Sicherheit von Spielzeug —  
Teil 3: Migration bestimmter Elemente  
(enthält Änderung A1:2000)

This European Standard was approved by CEN on 1994-12-13. Amendment A1 was approved by CEN on 2000-03-11. CEN members are bound to comply with the CEN/CENELEC Internal Regulations which stipulate the conditions for giving this European Standard the status of a national standard without any alteration.

Up-to-date lists and bibliographical references concerning such national standards may be obtained on application to the Central Secretariat or to any CEN member.

This European Standard exists in three official versions (English, French, German). A version in any other language made by translation under the responsibility of a CEN member into its own language and notified to the Central Secretariat has the same status as the official versions.

CEN members are the national standards bodies of Austria, Belgium, Czech Republic, Denmark, Finland, France, Germany, Greece, Iceland, Ireland, Italy, Luxembourg, Netherlands, Norway, Portugal, Spain, Sweden, Switzerland and United Kingdom.

# CEN

European Committee for Standardization  
Comité Européen de Normalisation  
Europäisches Komitee für Normung

**Central Secretariat: rue de Stassart 36, B-1050 Brussels**

## Foreword

This European Standard was prepared by CEN/TC 52, Safety of toys, of which the Secretariat is held by DS.

This European Standard has been prepared under a mandate given to CEN by the European Commission and the European Free Trade Association, and supports essential requirements of EC Directive(s).

This European Standard shall be given the status of a national standard, either by publication of an identical text or by endorsement, at the latest by June 1995, and conflicting national standards shall be withdrawn at the latest by June 1995.

This standard constitutes the third part of the European Standard on *Safety of toys*.

This part should be read in conjunction with part 1.

This standard specifies requirements and test methods for the migration of the elements antimony, arsenic, barium, cadmium, chromium, lead, mercury and selenium from toy material.

This standard contains 4 annexes.

- Annex A (normative) *deleted*.
- Annex B (normative) Sieve requirements.
- Annex C (informative) Preparation and analysis of test portions.
- Annex D (informative) Background and rationale for the requirements and test methods.

This standard is the result of the revision of EN 71-3:1988.

According to the CEN/CENELEC Internal Regulations, the national standards organizations of the following countries are bound to implement this European Standard: Austria, Belgium, Czech Republic, Denmark, Finland, France, Germany, Greece, Iceland, Ireland, Italy, Luxembourg, Netherlands, Norway, Portugal, Spain, Sweden, Switzerland and the United Kingdom.

## Foreword to amendment A1

This amendment EN 71-3:1994/A1:2000 to EN 71-3:1994 has been prepared by Technical Committee CEN/TC 52, Safety of toys, the Secretariat of which is held by DS.

This amendment to the European Standard EN 71-3:1994 shall be given the status of a national standard, either by publication of an identical text or by endorsement, at the latest by October 2000, and conflicting national standards shall be withdrawn at the latest by October 2000.

This amendment to the European Standard EN 71-3:1994 has been prepared under a mandate given to CEN by the European Commission and the European Free Trade Association, and supports essential requirements of EU Directive(s).

For relationship with EU Directive(s), see informative Annex ZA, which is an integral part of this standard.

According to the CEN/CENELEC Internal Regulations, the national standards organizations of the following countries are bound to implement this European Standard: Austria, Belgium, Czech Republic, Denmark, Finland, France, Germany, Greece, Iceland, Ireland, Italy, Luxembourg, Netherlands, Norway, Portugal, Spain, Sweden, Switzerland and the United Kingdom.

## Introduction

This European Standard for safety of toys consists of the following parts.

- *Part 1: Mechanical and physical properties;*
- *Part 2: Flammability;*
- *Part 3: Migration of certain elements;*
- *Part 4: Experimental sets for chemistry and related activities;*
- *Part 5: Chemical toys (sets) other than experimental sets;*
- *Part 6: Graphical symbol for age warning labelling.*

This standard is part 3 of the European Standard on safety of toys, EN 71.

The requirements of this standard are based on bioavailability resulting from the use of toys and should not as an objective exceed the below mentioned levels per day:

- 0,2 µg for antimony;
- 0,1 µg for arsenic;
- 25,0 µg for barium;
- 0,6 µg for cadmium;
- 0,3 µg for chromium;
- 0,7 µg for lead;
- 0,5 µg for mercury;
- 5,0 µg for selenium.

For the interpretation of these figures it has been necessary to identify an upper limit for the ingestion of toy material. Very limited data have been available for identifying this upper limit. As a working hypothesis, a summed average daily intake for the various toy materials has been gauged at the currently accepted figure of 8 mg/day, being aware that in certain individual cases this figure might be exceeded.

Combining the daily intake with the bioavailability figures listed above, limits are obtained for various toxic elements in microgram per gram (milligram per kilogram) and are detailed in Table 1. The figures obtained have been adjusted to minimize childrens' exposure to toxic elements and to ensure analytical feasibility taking into account limits achievable under current manufacturing conditions. (See Annex D.)

## 1 Scope

This part of this European Standard specifies requirements and test methods for the migration of the elements antimony, arsenic, barium, cadmium, chromium, lead, mercury and selenium from toy materials and from parts of toys except materials not accessible (see part 1 of this standard).

Packaging materials are not included unless they are part of the toy or have intended play value. (See Annex D.)

When appropriate, the toy is subjected to relevant tests, specified in part 1 of this standard, before the accessibility is considered.

Requirements are included for the migration from the following toy materials:

- coatings of paints, varnishes, lacquers, printing inks, polymers and similar coatings (see 8.1);
- polymeric and similar materials, including laminates, whether textile reinforced or not, but excluding other textiles (see 8.2);
- paper and paper board (see 8.3);
- textiles, whether natural or synthetic (see 8.4);
- glass/ceramic/metallic materials (see 8.5);
- other materials whether mass coloured or not (e.g. wood, fibre board, hard board, bone and leather) (see 8.6);
- materials intended to leave a trace (e.g. the graphite materials in pencils and liquid ink in pens) (see 8.7);
- pliable modelling materials, including modelling clays, and gels (see 8.8);
- paints, varnishes, lacquers, glazing powders and similar materials in solid or in liquid form appearing | as such in the toy (see 8.9).

Toys and parts of toys which, due to their accessibility, function, mass, size or other characteristics, obviously exclude any hazard due to sucking, licking or swallowing, bearing in mind the normal and foreseeable behaviour of children, are not covered by this part of EN 71.

NOTE For the purposes of this standard, the following criteria are considered appropriate in the categorization of sucking, licking or swallowing:

- all intended food/oral contact toys, cosmetic toys and writing instruments categorized as toys;
- toys intended for children up to 6 years of age, i.e. all accessible parts and components where there is a probability that those parts or components may come into contact with the mouth. (See Annex D.)

## 2 Normative references

This European Standard incorporates by dated or undated reference, provisions from other publications. These normative references are cited at the appropriate places in the text and the publications are listed hereafter. For dated references, subsequent amendments to or revisions of any of these publications apply to this European Standard only when incorporated in it by amendment or revision. For undated references the latest edition of the publication referred to applies.

EN 71-1, *Safety of toys — Part 1: Mechanical and physical properties.*

ISO 3696, *Water for analytical laboratory use — Specification and test methods.*

## 3 Definitions

For the purposes of this standard the following definitions apply.

### 3.1

#### **base material**

material upon which coatings may be formed or deposited

### 3.2

#### **coating**

all layers of material formed or deposited on the base material or toy and includes paints, varnishes, lacquers, inks, polymers or other substances of a similar nature, whether they contain metallic particles or not, of a similar nature no matter how it has been applied to the toy and which can be removed by scraping with a sharp blade

### 3.3

#### **detection limit of a method**

three times the standard deviation of the blank value

### 3.4

#### **other materials, whether mass coloured or not**

materials such as wood, leather and other porous substances which may absorb colouring matter without forming a coating

### 3.5

#### **paper and paper board**

a maximum mass per unit area of 400 g/m<sup>2</sup> is the limit for treating material under this category

above this mass per unit area the substance is treated as “other material” and may be fibre board or hard board, etc.

### 3.6

#### **scraping**

mechanical removal of coatings down to the base material

### 3.7

#### **toy material**

all the accessible materials present in toys

Table 1 — Limits of element migration from toy materials

Element		Sb	As	Ba	Cd	Cr	Pb	Hg	Se
Maximum migrated element in mg/kg toy material	Any toy material given in clause 1 except for: — modelling clay.	60	25	1 000	75	60	90	60	500
	Modelling clay	60	25	250	50	25	90	25	500

## 4 Requirements

### 4.1 Specific requirements

The migration of elements from toys and parts of toys as specified in clause 1 shall comply with the limits given in Table 1 when tested in accordance with clauses 7, 8 and 9. This requirement does not apply to lead solder when used for electric connections. (See Annex D.)

### 4.2 Interpretation of results

The analytical result of materials established in clauses 7, 8 and 9 shall be adjusted by subtracting the analytical correction in Table 2 to obtain an adjusted analytical result.

Materials are deemed to comply with the requirements of this standard if the adjusted analytical result is less than or equal to the limits in Table 1. (See Annex D.)

NOTE Due to the precision of the methods specified in this standard an adjusted analytical result is required to take into consideration the results of interlaboratory trials. (See Annex D.)

Example:

Analytical result of lead 120 mg/kg

Analytical correction from Table 2: 30 %

$$\text{Adjusted analytical result} = 120 - \frac{120 \times 30}{100} = 120 - 36.$$

Adjusted analytical result = 84 mg/kg. This is deemed as complying with the requirements of the standard. (Lead 90 mg/kg.)

## 5 Principle

Soluble elements are extracted from toy materials under the conditions which simulate the material remaining in contact with stomach acid for a period of time after swallowing. The concentrations of the soluble elements are determined quantitatively.

## 6 Reagents and apparatus

NOTE No recommendation is made for the reagents, materials, and apparatus necessary for carrying out the analytical tests specified in clause 9.

### 6.1 Reagents

During the analyses, use only reagents of recognized analytical grade. (See Annex D.)

6.1.1 *Hydrochloric acid solution*,  $c(\text{HCl}) = (0,07 \pm 0,005) \text{ mol/l}$ .

6.1.2 *Hydrochloric acid solution*,  $c(\text{HCl}) = (0,14 \pm 0,010) \text{ mol/l}$ .

6.1.3 *Hydrochloric acid solution*,  $c(\text{HCl}) = \text{approximately } 1 \text{ mol/l}$ .

6.1.4 *Hydrochloric acid solution*,  $c(\text{HCl}) = 2 \text{ mol/l}$ .

6.1.5 *Hydrochloric acid solution*,  $c(\text{HCl}) = \text{approximately } 6 \text{ mol/l}$ .

6.1.6 *n-heptane*, ( $\text{C}_7\text{H}_{16}$ ); 99 %.

6.1.7 *Water*, of at least grade 3 purity in accordance with ISO 3696.

## 6.2 Apparatus

Normal laboratory apparatus and

**6.2.1** *Plain weave wire cloth stainless steel metal sieve*, of nominal aperture size 0,5 mm and tolerances as indicated in Table B.1 in Annex B.

**6.2.2** *A means of measuring pH*, with an accuracy of  $\pm 0,2$  pH units. Cross-contamination shall be prevented. (See Annex D.)

**6.2.3** *Membrane filter*, with a pore size of 0,45  $\mu\text{m}$ .

**6.2.4** *Centrifuge*, capable of centrifuging at  $(5\ 000 \pm 500) g^2)$ . (See Annex D.)

**6.2.5** *A means to agitate the mixture*, at a temperature of  $(37 \pm 2) ^\circ\text{C}$ .

**6.2.6** *A selection of containers of gross volume*, between 1,6 times and 5,0 times that of the volume of hydrochloric acid extractant.

**Table 2 — Analytical correction**

Element	Sb	As	Ba	Cd	Cr	Pb	Hg	Se
analytical correction (in %)	60	60	30	30	30	30	50	60

## 7 Selection of test portions

A laboratory sample for testing shall consist of a toy either in the form in which it is marketed, or in the form in which it is intended to be marketed. Test portions shall be taken from accessible parts (see EN 71-1) of a single toy sample, i.e. identical materials in the toy may be combined and treated as a single test portion but additional toy samples shall not be used. Test portions are only permitted to be composed of more than one material or colour where physical separation, e.g. dot printing, patterned textiles or mass limitation reasons, precludes the formation of discrete specimens. (See Annex D.)

NOTE The requirement does not preclude that test portions can be taken from materials in a form such that they are representative of the relevant material specified above and the substrate upon which they are deposited. (See Annex D.)

Test portions where less than 10 mg of material are available are not tested.

## 8 Preparation and analysis of test portions

### 8.1 Coatings of paint, varnish, lacquer, printing ink, polymer and similar coatings

#### 8.1.1 Sample removal/preparation procedure

Remove the coating from the laboratory sample by mechanical means at room temperature and comminute it at a temperature not exceeding ambient. Obtain a test portion of not less than 100 mg passing through a metal sieve of aperture 0,5 mm (see 6.2.1).

Where there is only between 10 mg and 100 mg of comminuted uniform coating available this shall be tested in accordance with 8.1.2 and the quantity of the appropriate elements shall be calculated as if 100 mg of test portion had been used and the mass of the test portion shall be reported under 10e).

In the case of coatings that by their nature cannot be comminuted (e.g. elastic/plastic paint) remove a test portion from the laboratory sample without comminuting the coating.

#### 8.1.2 Test procedure

Using the appropriate sized container (see 6.2.6), mix the test portion so prepared with 50 times its mass of an aqueous solution at  $(37 \pm 2) ^\circ\text{C}$  of  $c(\text{HCl}) = 0,07 \text{ mol/l}$  (see 6.1.1). Where the test portion has a mass of between 10 mg and 100 mg, mix the test portion with 5,0 ml of this solution at  $(37 \pm 2) ^\circ\text{C}$ . Shake for 1 min. Check the acidity of the mixture. If the pH is greater than 1,5 add dropwise, while shaking the mixture, an aqueous solution of  $c(\text{HCl})$  approximately 2 mol/l (see 6.1.4) until the pH is between 1,0 and 1,5. Protect the mixture from light. Agitate the mixture at  $(37 \pm 2) ^\circ\text{C}$  (see 6.2.5) for 1 h continuously and then allow to stand for 1 h at  $(37 \pm 2) ^\circ\text{C}$ .

<sup>2)</sup>  $g = 9,806\ 65 \text{ m/s}^2$ .

Without delay, efficiently separate the solids from the solution, firstly by filtration using a membrane filter (see 6.2.3), and if necessary, by centrifuging at up to 5 000  $g^3$ ) (see 6.2.4). Separation shall be completed as soon as possible after the completion of the standing time; centrifuging shall take no longer than 10 min and shall be reported under 10e).

If the resulting solutions are to be kept for more than the working day prior to analysis they shall be stabilized by addition of hydrochloric acid so that the concentration of the stored solution is approximately  $c(\text{HCl}) = 1 \text{ mol/l}$ .

## 8.2 Polymeric and similar materials including laminates, whether reinforced textile or not, but excluding other textiles

### 8.2.1 Sample removal/preparation procedure

Obtain a test portion of not less than 100 mg of the polymeric or similar materials, whilst avoiding heating of the materials, according to the following directions.

Cut out test portions from the areas having the thinnest material cross section in order to ensure a surface area of the test pieces as large as possible in proportion to their mass. Each test piece shall in the uncompressed condition have no dimension greater than 6 mm.

If the laboratory sample is not uniform in its material, a test portion shall be obtained from each different material present in a mass greater than 10 mg. In the case where there is between 10 mg and 100 mg of uniform material the mass of the test portion shall be reported under 10e) and the quantity of the appropriate elements shall be calculated as if 100 mg of the test portion had been used.

### 8.2.2 Test procedure

Follow the procedure in 8.1.2.

## 8.3 Paper and paper board

### 8.3.1 Sample removal/preparation procedure

Obtain a test portion of not less than 100 mg of the paper or paper board.

If the laboratory sample is not uniform in its material, a test portion shall be obtained from each different material present in a mass of not less than 100 mg. Where there is between 10 mg and 100 mg of uniform material the mass of the test portion shall be reported under 10e) and the quantity of the appropriate elements shall be calculated as if 100 mg of the test portion had been used.

If the paper or paper board to be tested is coated with a coating of paint, varnish, lacquer, printing ink, adhesive or similar coating, test portions of the coating shall not be taken separately. In such cases test portions shall be taken from the material in accordance with this subclause in a way that they also include representative parts of the coated area. Test portions so obtained shall be taken in accordance with relevant methods specified in this subclause and this shall be reported under 10e). (See Annex D.)

### 8.3.2 Test procedure

Macerate the test portion so prepared with 25 times its mass of water (see 6.1.7) at  $(37 \pm 2) \text{ }^\circ\text{C}$  so that the resulting mixture is homogeneous. Quantitatively transfer the mixture to the appropriate sized container (see 6.2.6). Add to the mixture an aqueous solution of  $c(\text{HCl}) = 0,14 \text{ mol/l}$  (see 6.1.2) at  $(37 \pm 2) \text{ }^\circ\text{C}$  at 25 times the mass of the test portion.

Shake for 1 min. Check the acidity of the mixture. If the pH is greater than 1,5 add dropwise, while shaking the mixture, an aqueous solution of  $c(\text{HCl})$  approximately 2 mol/l (see 6.1.4) until the pH is between 1,0 and 1,5. Protect the mixture from light. Agitate the mixture at  $(37 \pm 2) \text{ }^\circ\text{C}$  (see 6.2.5) for 1 h continuously and then allow to stand for 1 h at  $(37 \pm 2) \text{ }^\circ\text{C}$ .

Without delay, efficiently separate the solids from the solution, firstly by filtration using a membrane filter (see 6.2.3), and if necessary, by centrifuging at up to 5 000  $g^3$ ) (see 6.2.4). Separation shall be completed as soon as possible after the completion of the standing time; centrifuging shall take no longer than 10 min and shall be reported under 10e).

If the resulting solutions are to be kept for more than the working day prior to analysis they shall be stabilized by addition of hydrochloric acid so that the concentration of the stored solution is approximately  $c(\text{HCl}) = 1 \text{ mol/l}$ .

<sup>3)</sup>  $g = 9,806 65 \text{ m/s}^2$ .

## **8.4 Textiles, whether natural or synthetic**

### **8.4.1 Sample removal/preparation procedure**

Obtain a test portion of not less than 100 mg of the textile material by cutting into test pieces, which in the uncompressed condition have no dimensions greater than 6 mm. (See Annex D.)

If the sample is not uniform in its material or colour, a test portion shall be obtained from each different material present in a mass greater than 100 mg. A portion forming a mass between 10 mg and 100 mg shall form part of the test portion obtained from the main material.

Samples taken from patterned textiles shall be representative of the whole material. (See Annex D.)

### **8.4.2 Test procedure**

Follow the procedure in 8.1.2.

## **8.5 Glass/ceramic/metallic materials**

### **8.5.1 Sample removal/preparation procedure**

Toys and components shall be first subjected to the relevant tests in accordance with EN 71-1. If the toy or component fits entirely within the small parts cylinder and contains accessible glass, ceramic or metallic materials then the toy shall be tested in accordance with 8.5.2 after removal of any coating in accordance with 8.1.1. (See Annex D.)

NOTE Toys and components that have no accessible glass, ceramic or metallic materials are not tested according to 8.5.2. (See Annex D.)

### **8.5.2 Test procedure**

Place the toy or component in a 50 ml glass container with nominal dimensions: height 60 mm, diameter 40 mm. Add a sufficient volume of an aqueous solution of  $c(\text{HCl}) = 0,07 \text{ mol/l}$  (see 6.1.1) at  $(37 \pm 2) \text{ }^\circ\text{C}$  to just cover the toy or component. Cover the container, protect the contents from light and allow the contents to stand for 2 h at  $(37 \pm 2) \text{ }^\circ\text{C}$ .

NOTE This type of container will take all components/toys that fit inside the small parts cylinder.

Without delay, efficiently separate the solids from the solution, firstly by decantation followed by filtration using a membrane filter (see 6.2.3), and if necessary, by centrifuging at up to  $5\,000 \text{ g}^4$  (see 6.2.4).

Separation shall be completed as soon as possible after the completion of the standing time; centrifuging shall take no longer than 10 min and shall be reported under 10e).

If the resulting solutions are to be kept for more than 24 h prior to analysis they shall be stabilized by addition of hydrochloric acid so that the concentration of the stored solution is approximately  $c(\text{HCl}) = 1 \text{ mol/l}$ .

## **8.6 Other materials, whether mass coloured or not (see Annex D)**

### **8.6.1 Sample removal/preparation procedures**

Obtain a test portion of not less than 100 mg of the material according to 8.2.1, 8.3.1, 8.4.1 or 8.5.1 whichever is appropriate.

If the laboratory sample is not uniform in its material, a test portion shall be obtained from each different material present in a mass greater than 10 mg. Where there is between 10 mg and 100 mg of uniform material, the mass of the test portion shall be reported under 10e), and the quantity of the appropriate elements shall be calculated as if 100 mg of the test portion had been used.

If the material to be tested is coated with a coating of paint, varnish, lacquer, printing ink or similar coating follow the procedure in 8.1.1.

### **8.6.2 Test procedures**

The materials shall be tested by the most appropriate method of 8.2.2, 8.3.2, 8.4.2 or 8.5.2. The method used shall be reported under 10e).

---

<sup>4)</sup>  $g = 9,806\,65 \text{ m/s}^2$ .

## 8.7 Materials intended to leave a trace

### 8.7.1 Sample removal/preparation procedure for materials in solid form

Obtain a test portion of not less than 100 mg of the material by cutting into test pieces, which in the uncompressed condition shall have no dimensions greater than 6 mm.

A test portion shall be obtained from each different material intended to leave a trace, present in the laboratory sample in a mass greater than 10 mg. Where there is between 10 mg and 100 mg of material, the mass of the test portion shall be reported under 10e) and the quantity of the appropriate elements shall be calculated as if 100 mg of the test portion had been used. If the material contains any grease, oil, wax or similar material, the test portion shall be enclosed in hardened filter-paper and these ingredients shall be removed with n-heptane by using solvent-extraction (see 6.1.6).

### 8.7.2 Sample removal/preparation procedure for materials in liquid form

Obtain a test portion of not less than 100 mg of the material from the laboratory sample. The use of an appropriate solvent to facilitate the obtaining of a test portion is permitted.

A test portion shall be obtained from each different material intended to leave a trace, present in the laboratory sample in a mass greater than 10 mg. Where there is between 10 mg and 100 mg of material, the mass of the test portion shall be reported under 10e) and the quantity of the appropriate elements shall be calculated as if 100 mg of the test portion had been used. If the material is intended to solidify in normal use and contains grease, oil, wax or similar material, the test portion shall be allowed to solidify under normal use conditions and the resulting material shall be enclosed in hardened filter-paper and the grease, oil, wax or similar material shall be removed with n-heptane (6.1.6) by using solvent-extraction.

### 8.7.3 Test procedure for samples not containing grease, oil, wax or similar material

Using the appropriate sized container (see 6.2.6), mix the test portion so prepared with 50 times its mass of an aqueous solution at  $(37 \pm 2)^\circ\text{C}$  of  $c(\text{HCl}) = 0,07 \text{ mol/l}$  (see 6.1.1). For a test portion mass of between 10 mg and 100 mg, mix the test portion with 5,0 ml of this solution at  $(37 \pm 2)^\circ\text{C}$ . Shake for 1 min. Check the acidity of the mixture.

If the test portion contains large quantities of alkaline materials, generally in the form of calcium carbonate, adjust the pH to between 1,0 and 1,5 with hydrochloric acid  $c(\text{HCl})$  approximately 6 mol/l (see 6.1.5) in order to avoid overdilution. The amount of hydrochloric acid used in relation to the amount of solution shall be reported under 10e). If only small quantities of alkaline material are present and the pH of the mixture is greater than 1,5 add dropwise, while shaking the mixture, an aqueous solution of  $c(\text{HCl})$  approximately 2 mol/l (see 6.1.4) until the pH is between 1,0 and 1,5. Protect the mixture from light. Agitate the mixture at  $(37 \pm 2)^\circ\text{C}$  (see 6.2.5) for 1 h continuously and then allow to stand for 1 h at  $(37 \pm 2)^\circ\text{C}$ .

### 8.7.4 Test procedure for samples containing grease, oil, wax or similar material

With the test portion remaining in the hardened filter-paper, macerate the test portion so prepared with 25 times the mass of the original material with water (see 6.1.7) at  $(37 \pm 2)^\circ\text{C}$  so that the resulting mixture is homogeneous. Quantitatively transfer the mixture to the appropriate sized container (see 6.2.6). Add to the mixture an aqueous solution of  $c(\text{HCl}) = 0,14 \text{ mol/l}$  (see 6.1.2) at  $(37 \pm 2)^\circ\text{C}$  in the proportion of 25 times the mass of the original test portion. In the case of a test portion mass between 10 mg and 100 mg macerate the test portion with 2,5 ml of water (see 6.1.7). Quantitatively transfer the mixture to the appropriate sized container (see 6.2.6). Add 2,5 ml of  $c(\text{HCl}) = 0,14 \text{ mol/l}$  (see 6.1.2) at  $(37 \pm 2)^\circ\text{C}$  to the mixture. Shake for 1 min. Check the acidity of the mixture. If the test portion contains large quantities of alkaline materials, generally in the form of calcium carbonate, adjust the pH between 1,0 and 1,5 with hydrochloric acid  $c(\text{HCl})$  approximately 6 mol/l (see 6.1.5) in order to avoid overdilution. The amount of hydrochloric acid used in relation to the amount of solution shall be reported under 10e).

If only a small quantity of alkaline material is present and the pH of the mixture is greater than 1,5 add dropwise, while shaking the mixture, an aqueous solution of  $c(\text{HCl})$  approximately 2 mol/l (see 6.1.4) until the pH is between 1,0 and 1,5. Protect the mixture from light. Agitate the mixture at  $(37 \pm 2)^\circ\text{C}$  (see 6.2.5) for 1 h continuously and then allow to stand for 1 h at  $(37 \pm 2)^\circ\text{C}$ .

NOTE The volume of the solution  $c(\text{HCl}) = 0,07 \text{ mol/l}$  or  $c(\text{HCl}) = 0,14 \text{ mol/l}$ , as the case may be, is calculated on the mass of the test portion prior to dewaxing.

Without delay, efficiently separate the solids from the solution, firstly by filtration using a membrane filter (see 6.2.3) and if necessary, by centrifuging at up to 5 000  $g^{50}$  (see 6.2.4). Separation shall be completed as

soon as possible after the completion of the standing time; centrifuging shall take no longer than 10 min and shall be reported under 10e).

If the resulting solutions are to be kept for more than the working day prior to analysis they shall be stabilized by addition of hydrochloric acid so that the concentration of the stored solution is approximately  $c(\text{HCl}) = 1 \text{ mol/l}$ .

## 8.8 Pliable modelling materials, including modelling clays, and gels

### 8.8.1 Sample removal/preparation procedure

Obtain a test portion of not less than 100 mg of the material from the laboratory sample.

A test portion shall be obtained from each different material in the laboratory sample. If the material contains grease, oil, wax or similar material, the test portion shall be enclosed in hardened filter-paper and these ingredients shall be removed with n-heptane by using solvent-extraction (see 6.1.6).

### 8.8.2 Test procedure for samples not containing grease, oil, wax or similar material

Using the appropriate sized container (see 6.2.6) mix the test portion so prepared after breaking up of clay or doughy materials, if appropriate, with 50 times its mass of an aqueous solution at  $(37 \pm 2) \text{ }^\circ\text{C}$  of  $c(\text{HCl}) = 0,07 \text{ mol/l}$  (see 6.1.1).

Shake the mixture for 1 min. Check the acidity of the mixture. If the test portion contains large quantities of alkaline materials, generally in the form of calcium carbonate, adjust the pH to between 1,0 and 1,5 with hydrochloric acid  $c(\text{HCl})$  approximately 6 mol/l (see 6.1.5) in order to avoid overdilution. The amount of hydrochloric acid used in relation to the amount of solution shall be reported under 10e). If only a small quantity of alkaline material is present and the pH of the mixture is greater than 1,5 add dropwise, while shaking the mixture, an aqueous solution of  $c(\text{HCl})$  approximately 2 mol/l (see 6.1.4) until the pH is between 1,0 and 1,5. Protect the mixture from light. Agitate the mixture at  $(37 \pm 2) \text{ }^\circ\text{C}$  (see 6.2.5) for 1 h continuously and then allow to stand for 1 h at  $(37 \pm 2) \text{ }^\circ\text{C}$ .

### 8.8.3 Test procedure for samples containing grease, oil, wax or similar material

With the test portion remaining in the hardened filter-paper, macerate the test portion so prepared with 25 times the mass of the original material with water (see 6.1.7) at  $(37 \pm 2) \text{ }^\circ\text{C}$  so that the resulting mixture is homogeneous. Quantitatively transfer the mixture to the appropriate sized container (see 6.2.6). Add to the mixture an aqueous solution of  $c(\text{HCl}) = 0,14 \text{ mol/l}$  (see 6.1.2) at  $(37 \pm 2) \text{ }^\circ\text{C}$  in the proportion of 25 times the mass of the original test portion. Shake for 1 min. Check the acidity of the mixture. If the test portion contains large quantities of alkaline materials, generally in the form of calcium carbonate, adjust the pH between 1,0 and 1,5 with  $c(\text{HCl})$  approximately 6 mol/l (see 6.1.5) in order to avoid overdilution. The amount of hydrochloric acid used in relation to the amount of solution shall be reported under 10e).

If only a small quantity of alkaline material is present and the pH of the mixture is greater than 1,5 add dropwise, while shaking the mixture, an aqueous solution of  $c(\text{HCl})$  approximately 2,0 mol/l (see 6.1.4) until the pH is between 1,0 and 1,5. Protect the mixture from light. Agitate the mixture at  $(37 \pm 2) \text{ }^\circ\text{C}$  (see 6.2.5) for 1 h continuously and then allow to stand for 1 h at  $(37 \pm 2) \text{ }^\circ\text{C}$ .

NOTE The volume of the solution  $c(\text{HCl}) = 0,07 \text{ mol/l}$  or  $c(\text{HCl}) = 0,14 \text{ mol/l}$ , as the case may be, is calculated on the mass of the test portion prior to dewaxing.

Without delay, efficiently separate the solids from the solution, firstly by filtration using a membrane filter (see 6.2.3), and if necessary, by centrifuging at up to  $5\,000 \text{ g}^{5)}$  (see 6.2.4). Separation shall be completed as soon as possible after the completion of the standing time; centrifuging shall take no longer than 10 min and shall be reported under 10e).

If the resulting solutions are to be kept for more than the working day prior to analysis they shall be stabilized by addition of hydrochloric acid so that the concentration of the stored solution is approximately  $c(\text{HCl}) = 1 \text{ mol/l}$ .

## 8.9 Paints, varnishes, lacquers, glazing powders and similar materials in solid or in liquid form

### 8.9.1 Sample removal/preparation procedure for materials in solid form

Obtain a test portion of not less than 100 mg of the material by scraping off the material or by cutting into test pieces, as appropriate, which in the uncompressed condition shall have no dimensions greater than 6 mm.

<sup>5)</sup>  $\text{g} = 9,806\,65 \text{ m/s}^2$ .

A test portion shall be obtained from each different material present in the laboratory sample in a mass greater than 10 mg. Where there is between 10 mg and 100 mg of material, the mass of the test portion shall be reported under 10e) and the quantity of the appropriate elements shall be calculated as if 100 mg of the test portion had been used. If the material contains any grease, oil, wax or similar material the test portion shall be enclosed in hardened filter-paper and these ingredients shall be removed with n-heptane by using solvent-extraction (see 6.1.6).

If the test portion is removed by scraping comminute the test portion so that the material is capable of passing through a metal sieve with an aperture of 0,5 mm (see 6.2.1).

### **8.9.2 Sample removal/preparation procedure for materials in liquid form**

Obtain a test portion of not less than 100 mg of the material from the laboratory sample. The use of an appropriate solvent to facilitate the obtaining of a test portion is permitted.

A test portion shall be obtained from each different material present in the laboratory sample in a mass greater than 10 mg. In the case where there is between 10 mg and 100 mg of material, the mass of the test portion shall be reported under 10e) and the quantity of the appropriate elements shall be calculated as if 100 mg of the test portion had been used. If the material is intended to solidify in normal use and contains grease, oil, wax or similar material, the test portion shall be allowed to solidify under normal use conditions and the resulting material shall be enclosed in hardened filter-paper and the grease, oil, wax or similar material shall be removed with n-heptane using solvent-extraction (see 6.1.6).

### **8.9.3 Test procedure for samples not containing grease, oil, wax or similar material**

Follow the procedure in 8.7.3.

### **8.9.4 Test procedure for samples containing grease, oil, wax or similar material**

With the test portion remaining in the filter-paper, macerate the test portion so prepared with 25 times the mass of the original material with water (see 6.1.7) at  $(37 \pm 2)^\circ\text{C}$  so that the resulting mixture is homogeneous. Quantitatively transfer the mixture to the appropriate sized container (see 6.2.6). Add to the mixture an aqueous solution of  $c(\text{HCl}) = 0,14 \text{ mol/l}$  (see 6.1.2) at  $(37 \pm 2)^\circ\text{C}$  in the proportion of 25 times the mass of the original test portion. Shake for 1 min. Check the acidity of the mixture. If the test portion contains large quantities of alkaline materials, generally in the form of calcium carbonate, adjust the pH to between 1,0 and 1,5 with  $c(\text{HCl})$  approximately 6 mol/l (see 6.1.5) in order to avoid overdilution. The amount of hydrochloric acid used in relation to the amount of solution shall be reported under 10e).

If only a small quantity of alkaline material is present and the pH of the mixture is greater than 1,5 add dropwise, while shaking the mixture, an aqueous solution of  $c(\text{HCl})$  approximately 2 mol/l (see 6.1.4) until the pH is between 1,0 and 1,5. Protect the mixture from light. Agitate the mixture  $(37 \pm 2)^\circ\text{C}$  (see 6.2.5) for 1 h continuously and then allow to stand for 1 h at  $(37 \pm 2)^\circ\text{C}$ .

NOTE The volume of the solution  $c(\text{HCl}) = 0,07 \text{ mol/l}$  or  $c(\text{HCl}) = 0,14 \text{ mol/l}$ , as the case may be, is calculated on the mass of the test portion prior to dewaxing.

Without delay, efficiently separate the solids from the solution, firstly by filtration using a membrane filter (see 6.2.3), and if necessary, by centrifuging at up to  $5\,000 \text{ g}^{6)}$  (see 6.2.4). Separation shall be completed as soon as possible after the completion of the standing time; centrifuging shall take no longer than 10 min and shall be reported under 10e).

If the resulting solutions are to be kept for more than one working day prior to analysis they shall be stabilized by addition of hydrochloric acid so that the concentration of the stored solution is approximately  $c(\text{HCl}) = 1 \text{ mol/l}$ .

## **9 Determination of the quantity of migrated elements**

For the determination of the quantity of elements given in clause 1, methods having a detection limit of a maximum of 1/10 of the values to be determined (see 4.1, Table 1) shall be applied. The detection limit (of a method) is deemed to be three times the standard deviation of the blank value as measured by the laboratory carrying out the analysis of the toy materials.

Laboratories deviating from this requirement shall report the detection limit under 10c).

<sup>6)</sup>  $g = 9,806\,65 \text{ m/s}^2$ .

## 10 Test report

The test report shall contain at least the following information:

- a) type and identification of the product and/or material tested;
- b) a reference to this European Standard (EN 71-3:1994);
- c) the techniques used for determining the quantity of each element and the detection limit if the limit is deviating from the requirements in clause 9;
- d) the results of the tests expressed as mg element/kg material, stating that the result is related to the soluble element;
- e) details of the procedure used (from clause 8) to prepare the test portion (including for example, if base material was incorporated, if centrifuging was required to separate the solids from the solution prior to analysis, if additional acid was required to lower the pH, if the ratio of solid to acid extractant exceeds 1 : 50) and if the specimen was adjusted to 1 mol/l for overnight storage;
- f) any departure by agreement or otherwise from the test procedure specified;
- g) date of the test.

**Annex A** *deleted*

**Annex B (normative)**  
**Sieve requirements**

**Table B.1 — Sieve dimensions and tolerances**

Dimensions in millimetres

Nominal aperture size	Nominal wire diameter in test sieve	Tolerances		
		Maximum deviation for size of an individual aperture	Tolerance for average aperture	Intermediate deviation (no more than 6 % of the apertures to exceed the nominal plus this figure)
0,500	0,315	+0,090	±0,018	+0,054

## Annex C (informative)

### Preparation and analysis of test portions

The diagram given below is an indication of which procedure to be used for the various toy materials.

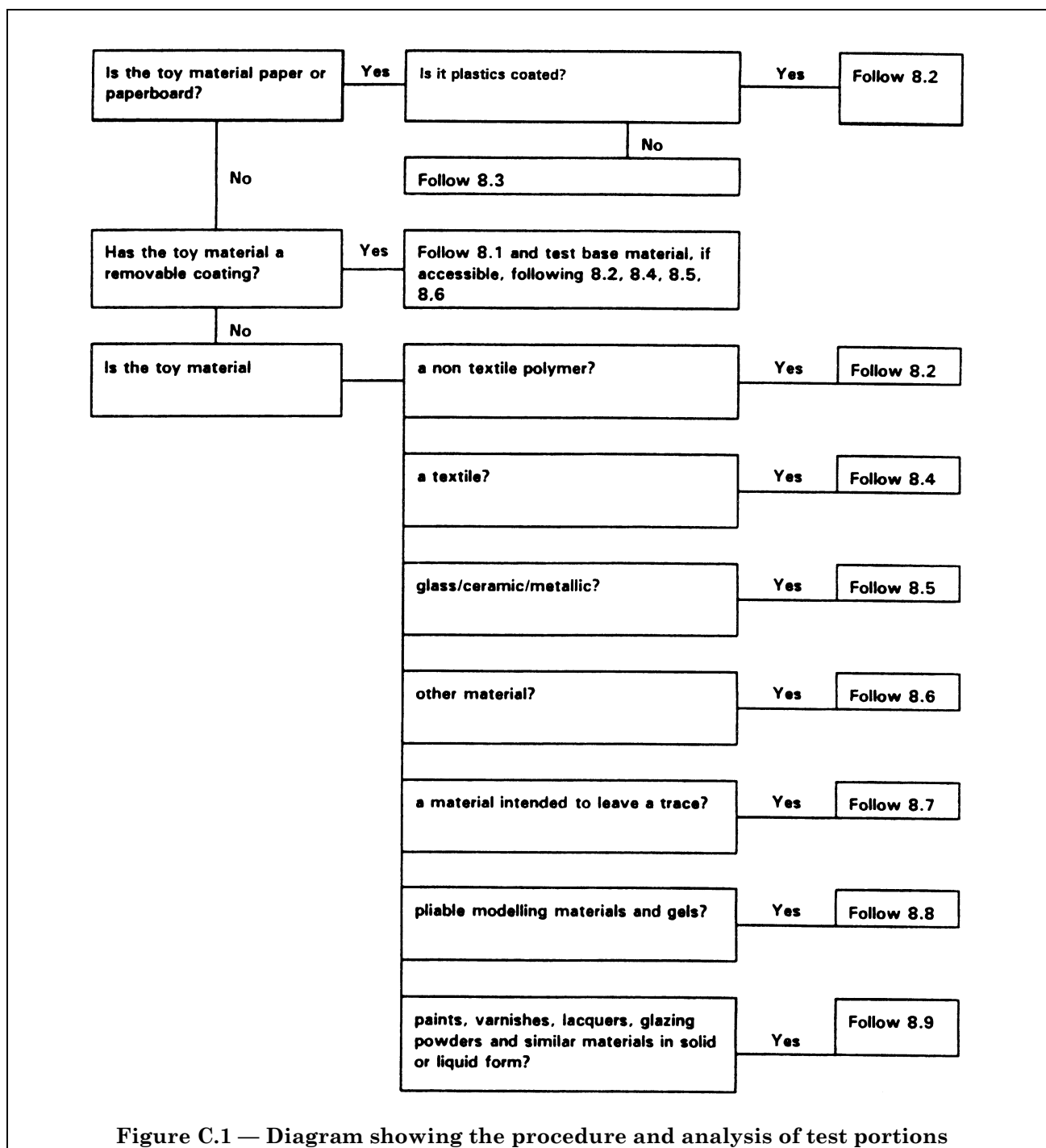


Figure C.1 — Diagram showing the procedure and analysis of test portions

## Annex D (informative)

### Background and rationale for the requirements and test methods in this part of EN 71

#### D.1 Introduction

The way bioavailability is defined in the Toy Safety Directive<sup>7)</sup> led to the test methods in the standard addressing the amount of soluble element migration from a toy material.

The approach of total element determinations was discounted because of the following reasons.

- a) The Directive indicates bioavailability limits and there has been no link to date between the availability of an element in a toy material with respect to extraction with simulated gastric solutions and the total element content of the material.
- b) In some instances such as barium sulfate, 2 % can be included in products to render them radio opaque. This use of barium would either have to be excluded from toys or a separate requirement made.

Cadmium compounds can be used as a stabilizer in plastics such as polyvinylchloride (PVC). These compounds under normal conditions are insoluble in the simulated gastric solution. Its use therefore, if total elements were determined, would have to be accounted for in the requirements of the standard. A case can be made for selenium, which can be present as a constituent of insoluble pigments, etc. (See also D.4.)

#### D.2 Scope

##### D.2.1 Packaging

“Unless part of the toy” is suggested to mean, for example, boxes containing jigsaw puzzles or where the instructions are included on the packaging in the case of games, etc., but taking into account the 2nd indent of the note in the scope restricting the requirements to toys intended for children up to 6 years of age. It is not intended to address for example, blister packs containing simple instructions.

##### D.2.2 Scope note

The note is intended to indicate an approach to the decision of what toys, or toy components are excluded from the standard because of characteristics that render them unlikely to present a risk of injury by the ingestion of materials containing the toxic elements.

This was considered a logical approach for a number of reasons including:

- as children get older there is less of a tendency for them to place toy/toy materials in their mouths and therefore the risk presented by the ingestion of toxic elements is reduced;
- the larger the toy, or the less accessible the material, the risk of ingestion of toxic elements is diminished.

It was therefore considered that all toys intended to be placed in the mouth, or close to the mouth would be tested, e.g. pencils.

Toys intended for children over the age of six years were considered not to pose a significant risk of injury through the ingestion of toxic elements.

<sup>7)</sup> See European Council Directive 88/378/EEC of 3 May 1988 concerning the safety of toys (published in the official journal of the EC No. L 187 of 16 July 1988).

### D.3 Specific requirements (see 4.1)

The limit of soluble barium has been raised from 500 mg/kg to 1 000 mg/kg for the following reasons.

The use of barium sulfate in toys has led to levels of soluble barium in the extraction solution  $c(\text{HCl}) = (0,07 \pm 0,005) \text{ mol/l}$  at 37 °C of between 400 mg/kg and 600 mg/kg as expressed in the weight of toy material taken. This level is such that due to the statistical uncertainty of the determination, a PASS or FAIL could not be indicated.

The formation of non-bioavailable colloidal barium sulfate crystals in the filtrate resulting in levels of apparently soluble barium which exceed 500 mg/kg because of problems with filtration.

In addition, the previous limit of migration of barium of 500 mg/kg from toy materials was not consistent with 25,0 µg/day bioavailability and the 8 mg/day of toy material intake; 25,0 µg corresponds to a migration limit of 3 125 mg/kg. It is understood that the 500 mg/kg limit was consciously selected despite the "theoretical" 3 125 mg/kg figure. The effect of the 500 mg/kg limit was to reduce the bioavailability from the advised 25 µg to 4 µg. It should be noted that the 25,0 µg figure has been reduced from an initial 50,0 µg, not for toxicological reasons, but according to the Commission of the European Communities, "to reduce the avoidable input on body burden".

### D.4 Statistical uncertainty of the test procedure and interpretation of results (see 4.2)

Most chemical test methods are designed to measure the total amount of a substance in a material. This makes it easier to obtain an accurate result with close statistical agreement between laboratories because there is an absolute or true value.

Because of the way bioavailability is defined in the Toy Safety Directive<sup>8)</sup>, the test methods in the standard measure the amount of soluble element migration from a toy material. With this type of chemical test the result is dependent upon the specified conditions of test and there is no absolute or true value. Consequently, it is more difficult to obtain close statistical agreement between laboratories when performing such migration tests.

This is illustrated by the statistical information in the 1988 edition of the standard taken from a 1987 European interlaboratory trial involving 17 laboratories. Results on an identical material varied by at least 30 % and up to 50 % between laboratories depending on the instrumental technique used to measure the soluble element concentration of the filtrate. Moreover, these figures would be approximately 3 times higher if adjusted to give a 95 % confidence level.

This degree of statistical uncertainty creates problems for manufacturers and enforcement authorities if test results are near the maximum limits allowed in the standard. Then it is not statistically possible to pass or fail a toy and it leads to inconsistency in the interpretation of results.

There is no direct relationship between the total element content of a toy material and the soluble migration of that element under the standard test conditions. Therefore, measuring the total element content and converting the result to give a soluble element figure is not an answer to this problem. Setting maximum total element limits is a possibility but requires an amendment to the Toy Safety Directive<sup>8)</sup>. (See also D.1.)

Since 1988, the test procedure for paint coatings on toys has been thoroughly investigated to find which parameters significantly affect the results. The most critical parameter is the shape, size and mass of the paint particles produced by removal of the paint and its subsequent comminution. Other less critical parameters include the method of shaking, the temperature, and the type and porosity of filter-paper.

As a result, a defined scraping and comminution procedure for collecting a 300 µm to 500 µm paint test portion was proposed as a revision to the test procedure. A European interlaboratory trial was conducted in 1993 with 29 participating laboratories to compare the amended procedure with that in the 1988 standard.

The trial showed that results on an identical material can vary by at least 25 % and up to 80 % depending on the instrumental technique used to measure the soluble element concentration of the filtrate.

Statistical agreement between laboratories showed improvement using a defined scraping procedure, but not when collecting a 300 µm to 500 µm test portion. However, any improvement was not significant enough to justify the proposed changes.

---

<sup>8)</sup> See page 14.

The trial confirmed that different instrumental techniques contribute to the statistical uncertainty of the test procedure. It was also noted that laboratories need to check and calibrate their instruments on a regular basis to ensure accurate readings. Inductively Coupled Plasma (ICP) was more widely used by laboratories this time and tended to show better agreement for most of the elements, particularly arsenic, antimony and selenium. However, it is not as sensitive as hydride generation methods for low levels of the same elements.

A test procedure that produces results varying, at best, by 25 % between laboratories would normally be considered as technically unsuitable as a reference method. However, in reality, toys will either easily pass or fail this test and only in relatively few cases will a result come within the area of uncertainty. When this occurs, it is important that laboratories interpret the results in the same way.

It has been accepted that the test procedure cannot be improved without imposing time consuming, costly, and in some cases, impractical burdens on laboratories with little benefit in terms of statistical agreement and safety. Therefore, the procedure allows laboratories to use their preferred technique for scraping the paint off toys, collecting the portion that passes through a 500 µm sieve and determining the soluble element concentration of the filtrate.

To achieve consistent interpretation of results, a correction factor for each element has been introduced into the standard applicable to all instrumental techniques. These are taken from the precision data in the 1988 standard and are used when an analytical result equals or exceeds the maximum limit. The analytical result is adjusted as described in 4.2, using the relevant correction factor. This way of interpreting the results is perfectly adequate as a screening test to differentiate between safe and unsafe toys as well as ensuring the safety of children.

In future, it is recommended that laboratories check and compare their performance when using the test procedure by using reference materials and participating in a proficiency scheme.

#### **D.5 Reagents** (see 6.1)

##### **D.5.1** *deleted*

#### **D.6 Apparatus** (see 6.2)

##### **D.6.1** *Plain weave wire cloth stainless steel metal sieve* (see 6.2.1)

See D.4.

##### **D.6.2** *A means of measuring pH* (see 6.2.2)

The measurement of pH is now not restricted to the use of a pH meter.

##### **D.6.3** *Centrifuge* (see 6.2.4)

This is a new subclause and specifies the performance requirements for centrifuging limits and amount of time permitted for centrifuging (to 10 min) and requires this to be reported under 10e). The later is necessary as centrifuging has been reported to increase the extraction of barium.

##### **D.6.4** *A selection of containers* (see 6.2.6)

The indication of the gross volume of the containers is intended to ensure adequate movement of the solution leading to a more efficient extraction.

**D.7 Selection of test portions** (see clause 7)

The practice of analysing “composite” (combination of different materials or colours) test portions is neither appropriate nor will it normally be necessary (with the availability of the “5,0 ml” test method). The analysis of composite materials is not satisfactory because from a theoretical viewpoint it can result in the reduction in the migration of toxic elements that would otherwise occur. A simple example is known to have occurred, i.e. barium extraction from paint was reduced when co-extracted with another paint. This may have been the result of a counter-ion in the second paint which would cause the barium to be precipitated. Sulfate is such a counter-ion; whether sulfate itself was involved is not known and is not important for the establishment of this principle. Thus, except for the cases where the separation of colours or toy material is impractical, e.g. dot printing, each discrete area is treated as a single sample.

The note makes it possible to test toy materials which are not in the form of a toy for reference purposes. However, the standard clearly requires taking of test portions from the toy itself.

**D.8 Paper and paper board** (see 8.3)**D.8.1 Sample removal/preparation procedure** (see 8.3.1)

Paper and paper board are to be treated as if they were a single material, i.e. surface coatings, if present, are not to be removed, but test portions will include representative parts of the surface. This procedure has been adopted because in the practical situation of a child chewing paper and paper board, preferential removal of a coating is unlikely and the substrate is equally important.

**D.9 Textiles, whether natural or synthetic** (see 8.4)**D.9.1 Sample removal/preparation procedure** (see 8.4.1)

It is not feasible to take separate coloured test portions from a complex patterned fabric. It is therefore required that a single test portion be taken that represents all the colours in the material.

**D.10 Glass/ceramic/metallic materials** (see 8.5)**D.10.1 Sample removal/preparation procedure** (see 8.5.1)

Toys or components which do not fit entirely within the “small parts cylinder” of EN 71-1 are not tested because there is no hazard from ingestion and no significant extraction occurs with saliva simulator. The small parts cylinder is used to assess the size of toy/toy components of all relevant age groups.

Comminution of glass, ceramic and metallic materials is inappropriate. Agitation of the test solution would be impractical for many examples and thus extraction is carried out without shaking. The diameter of the vessel and the orientation of the test portion have been selected to minimize variables.

Glass, ceramic and metallic materials completely coated so that no glass, ceramic or metal is accessible as defined in EN 71-1 are not tested according to this requirement.

Where glass, ceramic and metal surfaces are accessible even when partially covered by a coating these are tested in accordance with 8.5.2 after removal of the partial coating entirely according to the method in 8.1.1. This procedure is a compromise as only a single toy may be taken as a sample as specified in clause 7 of this standard.

**D.11 Other materials, whether mass coloured or not** (see 8.6)

This subclause incorporates mass coloured materials and other materials which are not coloured such as wood, hardboard, leather and bone, etc. which may have received some other treatment, but were not covered by the 1988 standard.

**Annex ZA (informative)****Clauses of this European Standard addressing essential requirements or other provisions of EU Directives**

This European Standard has been prepared under a mandate given to CEN by the European Commission and the European Free Trade Association and supports essential requirements of EU Directive 88/378/EEC.

**WARNING:** Other requirements and other EU Directives may be applicable to the product(s) falling within this standard.

The following clause of this standard as detailed in Table ZA.1, is likely to support requirements of Directive 88/378/EEC.

Compliance with the clauses of this standard provides one means of conforming with the specific essential requirements of the Directive concerned and associated EFTA regulations.

**Table ZA.1 — Correspondence between this European Standard and EU Directives**

Essential Requirements of Directive 88/378/EEC as given in its Annex II	Corresponding clause of this part of EN 71
II.3 1., 2. and 3. (Chemical properties)	6.1.6, 8.7.1, 8.7.2, 8.8.1, 8.9.1, 8.9.2

---

---

## **BSI — British Standards Institution**

BSI is the independent national body responsible for preparing British Standards. It presents the UK view on standards in Europe and at the international level. It is incorporated by Royal Charter.

### **Revisions**

British Standards are updated by amendment or revision. Users of British Standards should make sure that they possess the latest amendments or editions.

It is the constant aim of BSI to improve the quality of our products and services. We would be grateful if anyone finding an inaccuracy or ambiguity while using this British Standard would inform the Secretary of the technical committee responsible, the identity of which can be found on the inside front cover. Tel: 020 8996 9000. Fax: 020 8996 7400.

BSI offers members an individual updating service called PLUS which ensures that subscribers automatically receive the latest editions of standards.

### **Buying standards**

Orders for all BSI, international and foreign standards publications should be addressed to Customer Services. Tel: 020 8996 9001. Fax: 020 8996 7001. Standards are also available from the BSI website at <http://www.bsi-global.com>.

In response to orders for international standards, it is BSI policy to supply the BSI implementation of those that have been published as British Standards, unless otherwise requested.

### **Information on standards**

BSI provides a wide range of information on national, European and international standards through its Library and its Technical Help to Exporters Service. Various BSI electronic information services are also available which give details on all its products and services. Contact the Information Centre. Tel: 020 8996 7111. Fax: 020 8996 7048.

Subscribing members of BSI are kept up to date with standards developments and receive substantial discounts on the purchase price of standards. For details of these and other benefits contact Membership Administration. Tel: 020 8996 7002. Fax: 020 8996 7001. Further information about BSI is available on the BSI website at <http://www.bsi-global.com>.

### **Copyright**

Copyright subsists in all BSI publications. BSI also holds the copyright, in the UK, of the publications of the international standardization bodies. Except as permitted under the Copyright, Designs and Patents Act 1988 no extract may be reproduced, stored in a retrieval system or transmitted in any form or by any means – electronic, photocopying, recording or otherwise – without prior written permission from BSI.

This does not preclude the free use, in the course of implementing the standard, of necessary details such as symbols, and size, type or grade designations. If these details are to be used for any other purpose than implementation then the prior written permission of BSI must be obtained.

If permission is granted, the terms may include royalty payments or a licensing agreement. Details and advice can be obtained from the Copyright Manager. Tel: 020 8996 7070.